

# Exultate Deo

Volume 33, Number 1

Spring, 2013



Youth Choral Festival, Marianna Simpson, Conductor, January 2012

## Garmon Ashby to Conduct Choir Camp 2013

*21st Annual Diocesan Choir Camp Brenham, TX July 7-13, 2013*

This year's Guest Conductor will be Mr. Garmon Ashby. He is the Chair of Performing Arts, Organist and Choir Director at Episcopal High School in Houston. He also serves as Director of Music of St. Thomas the Apostle Church, Nassau Bay, Houston. He grew up in South Africa, where he earned his Bachelor of Music degree at Rhodes University and later moved to the United States to pursue his Master of Music at Yale. He has taught at Kingswood College in Grahamstown,

South Africa, and served as director of music at the Diocesan College (Bishops) in Cape Town for 14 years.

Youth in rising grades 4-8 (grade 3 with director recommendation) will gather at Blinn College in Brenham, Texas for a week with guest conductor Garmon Ashby to sing together and enjoy meals and fellowship in the Blinn College dorm. Daily outings for swimming, Blue Bell ice cream, outreach projects and even a trip to Horseshoe Junction Family Fun Park are planned.



Garmon Ashby

*Continued on page 3*

### SAVE THE DATE!

The Diocesan (Adult) Choral Festival will be held on Saturday and Sunday October 19 and 20 at Christ Church Cathedral. The Director and Repertoire will be announced in the near future through the Diolog and on the Music Commission webpage [www.epicenter.org/musiccommission](http://www.epicenter.org/musiccommission)



## Table of Contents

From the Chair.....page 2

Mailing List  
and E-Mail Updates .....page 2

Choir Camp .....pages 1 & 3

Read about the 53th  
Annual Diocesan Adult  
Choral Festival.....page 4

Spring & Summer 2012 Music  
Conferences and Events .....page 4

Cathedral Dates.....page 4

Hymns for  
April - September....page 6Hymnfest  
page 10

## From the Chair

SPRINGTIME--New Beginnings and Changes

Happy Easter!

Since the late 1990s, I have been honored to serve with some of the most talented and interesting musicians in our Diocese. I look forward to seeing them at quarterly meetings, festivals and camps. The Music Commission continues its valuable and interesting work, but we will be transitioning to a new model of service, replacing the formal Commission with committees to plan and run our yearly events. The new model takes effect as we come under the Diocese's funding, versus previous the funding by parishes only through the Mission Funding process.

I have been honored to serve as Chair of the Diocesan Music Commission for ten years, since 2003. I am excited about the opportunities to involve fresh ideas and more musicians in our new process. I will continue to serve Bishop Doyle and the Diocese as we move forward. I hope to see you at our 2013 events!

Faithfully,

*Linda Patterson*

Dr. Linda Patterson  
St. Peter's Episcopal Church  
P. O. Box 937  
Brenham, TX 77833  
979-836-7248 ext. 13



## Exultate Deo

*A Publication of the Music Commission of the Episcopal Diocese of Texas*

### Mailing List Updates

To update or add to the Music Commission mailing list, please contact Bonnie Harris-Reynolds, 511 Dexter Drive, College Station, TX 77840, (979) 696-0452 (home), or (979) 696-8903 (St. Thomas) or by e-mail: [music@stthomasbcs.org](mailto:music@stthomasbcs.org) (St. Thomas).

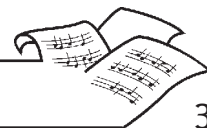
### E-Mail Updates

We are assembling an e-mail list of musicians of the Diocese. Please send e-mail information to Bonnie Harris-Reynolds: [music@stthomasbcs.org](mailto:music@stthomasbcs.org)  
Download additional copies of this issue, camp forms and Choral Festival registrations from our Web page at [www.epicenter.org/musiccommission](http://www.epicenter.org/musiccommission)



# Choir Camp: *Continued from page 1*

No previous choral experience is required, but experienced singers will also be challenged! At the end of the week, the family service at St. Peter's Episcopal Church in Brenham will close the week's activities. For more information, contact Dr. Linda Patterson [choircamp@sbcglobal.net](mailto:choircamp@sbcglobal.net) or 979-836-7248 ext. 13. To register online, visit the Music Commission's webpage at [www.epicenter.org/musiccommission](http://www.epicenter.org/musiccommission)



# Spring & Summer 2013 Music Conferences and Events

**The St. Cecilia Consort presents  
St. Cecilia's Summer Solstice  
Concert: Notre Dame de Paris and  
San Marco in Venice**

*Sunday, June 23, 7:30 p.m.*  
St. Thomas Episcopal Church  
906 George Bush Drive,  
College Station, TX

*June 30 – July 3*

**AGO: American Guild of Organists  
Region VII Convention**

*Sunday, June 20 – Wednesday, July 3*  
– Austin, Texas  
Concerts – Recitals – Organs and  
Organists – Choral Ensembles –  
Concertos - Composers – Worship  
Services - Workshops – Professional  
Concerns – Regional Meetings - More !  
Austinago2013.org

*June 30 – July 4*

**AAM: Association of Anglican  
Musicians**

**AAM Denver Conference**  
*Sunday, June 30 – Thursday, July 4 -*  
*Denver, CO*  
Liturgies – Concerts – Recitals –  
Workshops - Fellowship  
<http://conference.anglicanmusicians.org>

*June 30 – July 3*

**Association of Lutheran Church  
Musicians**

2013 Biennial Conference: "God is  
Here: Worship in a Wireless World"  
Hymn Festival, Worship, Organ Recital,  
Choral Leadership, Workshops  
*Sunday, June 30 – Wednesday, July 3,*  
Valparaiso, IN  
<http://www.alcm.org>

*July 23-28*

**38th Mississippi Conference on  
Church Music and Liturgy**

*Tuesday, July 23 – Sunday, July 28*  
Duncan M. Gray Conference Center,  
Canton, MS  
[www.mississippiconference.org](http://www.mississippiconference.org)

*July 15-21*

**63rd Annual Sewanee Church Music  
Conference**

*Monday, July 15 – Sunday, July 21*  
The University of the South & DuBose  
Conference Center  
Sewanee and Monteagle, TN  
[www.sewaneecconf.com](http://www.sewaneecconf.com)

## Cathedral Dates

**Music at Christ Church Cathedral,  
1117 Texas Avenue, Houston  
Palm Sunday Evensong featuring  
Liszt's Via Crucis**  
*Sunday, March 24 at 5:00 p.m.*

**Organ Concert by Cameron  
Carpenter**

*Wednesday, April 10, 7:30 p.m.*  
Charge for Admission  
An event of Society for the Performing  
Arts  
For ticket information see  
<http://www.spahouston.org/>

Organ Concert by Kathryn White,  
4:15 p.m.  
Pentecost Evensong, 5:00 p.m.  
*Sunday, May 19*



## Diocesan Adult 53rd Choral Festival

*Saturday and Sunday, October 19 and 20, 2013*

*Saturday, October 19th*

10:00 a.m. – 1:00 p.m. Rehearsal for choristers  
in the Houston area  
(of course, anyone may  
attend)

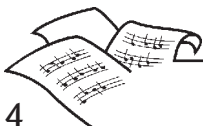
*Sunday, October 20th*

3:00 p.m. – 5:30 p.m. Rehearsal for all festival  
participants  
5:30 p.m. – 6:00 p.m. Break with Snack  
6:00 p.m. Service

The Director and Repertoire will be announced  
in the near future through the Diolog and on the  
Music Commission webpage  
[www.epicenter.org/musiccommission](http://www.epicenter.org/musiccommission)



Canon Bob Simpson conducting the Diocesan (Adult) Choral Festival  
at Christ Church Cathedral, October 2012



# The Leadership Program for Musicians (LPM)

**The Leadership Program for Musicians is a teaching ministry that gives church musicians an increased sense of vocational awareness, along with the tools and resources to enable congregations to sing well and participate actively in worship.**

The Leadership Program for Musicians is a national organization who administers a curriculum covering key areas in church music and liturgical education as well as spiritual formation. LPM is a program of the Episcopal Church USA and the Evangelical Lutheran Church in America. LPM is taught by highly qualified teachers and tailored to local needs. Successful completion of all courses earns the LPM Certificate in Church Music. The program is taught locally and covers a full range of church music skills. Particular attention is paid to smaller church needs.

LPM is a two-year program with seven courses, which may be taken in whole or part, beginning any year: Leadership of Congregational Song (piano/organ/keyboards, voice/cantor, or guitar/other instruments), Teaching New Music to the Congregation, Survey of Christian Hymnody, Liturgy and Liturgical Planning: Foundations for Christian Worship, Resources for an Effective Music Program, Principles for Choral Leadership: Conducting for Church Musicians and Voice Training for Choirs, and Philosophy of Church Music. Classes typically meet one Saturday a month September through May.

LPM 2013-2014 and 2014-2015 in Texas will be held at Trinity Lutheran Church of Frelsburg, 2309



FM 1291, New Ulm, Texas 78950, in the triangle formed by Columbus, La Grange, and Brenham, just off the intersection of FM 109 and FM 1291, next to the Frelsburg Fire Department. **Open House** for anyone who is interested is scheduled on Saturday, September 14, 2013 at Trinity Lutheran Church of Frelsburg.

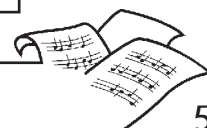
**Marti Rideout Scholarship applications due no later than June 1.** Marti Rideout was in LPM since its inception in 1991, serving as a course writer, member of the LPM Board, national LPM Consultant-Coordinator, coordinator, teacher, and national conference leader. Now retired from the LPM board, this scholarship was created to honor Marti's unique contributions to LPM.

Any local LPM program students in financial need may apply for the scholarship, which pays for up to 1/3 of the cost of LPM tuition for the year's program. The scholarship is awarded for use in the student's first year in LPM. Preference is shown for students desiring to remain in LPM for the complete two-year program and receive the LPM certificate at the successful completion of all requirements. Students must reapply for the second year's scholarship, which will require a confirming letter from the local LPM coordinator, and should include verification of the student's successful completion of first-year requirements.

For more information or a hard-copy brochure, contact Marsha Seale, Texas-Louisiana LPM Coordinator, 713-562-6972, mkseale52@msn.com. The national website is [www.lpm-online.org](http://www.lpm-online.org).

## NOTE from Bruce Power – Date for Diocesan Youth Choral Festival

From Diocesan Music Commission:  
Friends, Please put the following date on your calendar. It is the date for the Diocesan Youth Choral Festival. **Saturday, February 1, 2014**



# Hymns for April-September, 2013

Hymns for April and May were chosen by Shawn Sanders, Christ the King Episcopal Church, Atascocita.

Hymns for June and July were chosen by Bonnie Harris-Reynolds, St. Thomas, College Station.

Hymns for August and September were chosen by Mike Mason, St. Timothy's Anglican Church, Spring.

Hymns are chosen for the various propers.

|   | <b>Entrance</b> | <b>Sequence</b> | <b>Offertory</b> | <b>Communion</b> | <b>Exit</b> |
|---|-----------------|-----------------|------------------|------------------|-------------|
| April 7, Easter II                        | 539             | 452             | 366              | 576              | 490         |
| April 14, Easter III                      | 618             | 421             | 691              | 255              | 535         |
| April 21, Good Shepherd Sunday, Easter IV | 625             | 645             | 663              | 664              | 708         |
| April 28, Easter V                        | 432             | 358             | 400              | 395              | 412         |
| May 5, Easter VI                          | 135             | 538             | 493              | 567              | 539         |
| May 12, Ascension Sunday, Easter VII      | 215             | 48              | 388              | 579              | 214         |
| May 19, Pentecost                         | 228             | 508             | 513              | 711              | 506         |
| May 26, Trinity Sunday                    | 362             | 516             | 510              | 512              | 379         |
| June 2, II Pentecost                      | 372             | 567             | 408              | 676              | 522         |
| June 9, III Pentecost                     | 390             | 411             | 487              | 302              | 493         |
| June 16, IV Pentecost                     | 470             | 707             | 382              | 313              | 410         |
| June 23, V Pentecost                      | 388             | 658             | 652              | 309              | 686         |
| June 30, VI Pentecost                     | 359             | 550             | 654              | 312              | 564         |
| July 7, VII Pentecost                     | 657             | 474             | 528              | 321              | 544         |
| July 14, VIII Pentecost                   | 1               | 609             | 660              | 304              | 344         |
| July 21, IX Pentecost                     | 401             | 440             | 488              | 314              | 423         |
| July 28, X Pentecost                      | 587             | 615             | 711              | 341              | 709         |
| August 4, (Proper 13)                     | 408             | 516             | 701              | 529              | 665         |
| August 11 (Proper 14)                     | 533             | 623             | 703              | 709              | 68          |
| August 18, (Proper 15)                    | 545             | 253             | 472              | 490              | 636/637     |
| August 25, (Proper 16)                    | 8               | 368             | 587              | 315              | 624         |
| September 1, (Proper 17)                  | 423             | 437             | 598              | 321              | 568         |
| September 8, (Proper 18)                  | 372             | 654             | 472              | 606              | 603         |
| September 15, (Proper 19)                 | 410             | 706             | 663              | 333              | 469         |
| September 22, (Proper 20)                 | 390             | 488             | 550              | 345              | 594         |
| September 29, (Proper 21)                 | 375             | 705             | 574              | 709              | 625         |

W = Wonder, Love, and Praise, L = Lift Every Voice and Sing II

